

Neo – Application examples

PCD

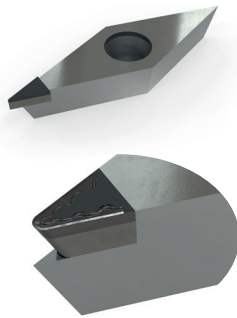
Roughing of standard ISO PCD inserts

Insert and Process data

- Material: PCD
- Geometry: V
- Processing time: 36 s
- Volume removed: 2.2 mm³
- Removal rate: 3.7 mm³/min

Customer benefits

- Higher process stability during finish grinding on periphery grinding machine
- Shorter & consistent grinding cycles
- Lower grinding & dressing wheel wear
- Bottleneck reduction on the periphery grinding machine



PCD

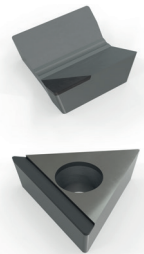
Roughing of non standard ISO PCD inserts

Insert and Process data

- Material: PCD Tip on carbide
- Processing time: 49 s
- Volume removed: 4.2 mm³
- Removal rate: 5 mm³/min

Customer benefits

- Higher process stability during finish grinding on periphery grinding machine
- Shorter & consistent grinding cycles
- Lower grinding & dressing wheel wear
- Bottleneck reduction on the periphery grinding machine



PCD

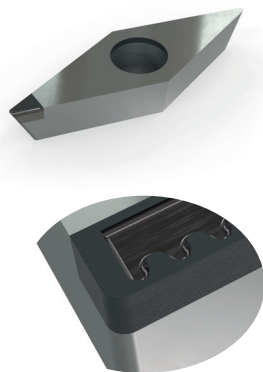
Chip breaker

Insert data

- Material: PCD Tip on carbide
- Geometries: V and C

Process data

- Processing time: 91 s
- Volume removed: 3.14 mm³
- Removal rate: 2.1 mm³/min



CVD

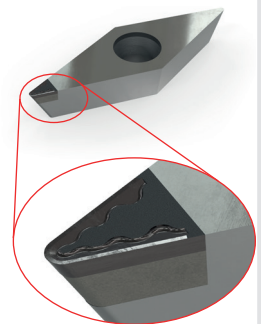
Chip breaker

Insert data

- Material: CVD Tip on carbide
- Geometry: V

Process data

- Processing time: 120 s
- Volume removed: 1.68 mm³
- Removal rate: 0.85 mm³/min



Neo – Application examples

CBN

Clamping hole

Insert data

- Material: CBN
- Geometry: C



Process data

- Processing time: 306 s
- Volume removed: 70 mm³
- Removal rate: 13 mm³/min

Carbide

Logo & QR-Code

Insert data

- Material: Carbide
- Geometry: C



Process data

- Processing time: 3 s
- Volume removed: 2.5 mm³
- Removal rate: 90 mm³/min

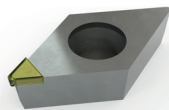


MCD

Contour of monocrystalline diamond

Insert data

- Material: MCD
- Geometry: D



Process data

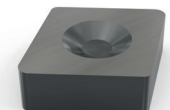
- Processing time: 40 s
- Volume removed: 2.5 mm³
- Removal rate: 3 mm³/min

CBN

Clamping geometry

Insert data

- Material: CBN
- Geometry: C



Process data

- Processing time: 120 s
- Volume removed: 26 mm³
- Removal rate: 13 mm³/min